



GMT: **Ricardo Shoiti Komatsu**

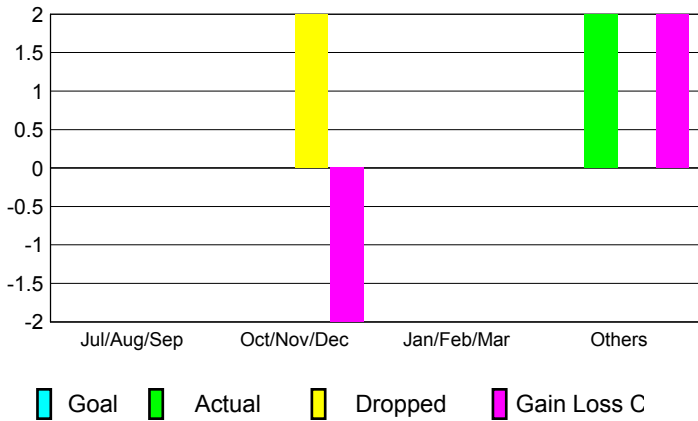
Location: **BRAZIL**

GMT CA: **3**

**CLUBS**

| Month            | New Club Goal | Actual New Clubs | Actual Dropped Clubs | Gain/Loss of Clubs |
|------------------|---------------|------------------|----------------------|--------------------|
| <b>2012-2013</b> |               |                  |                      |                    |
| Jul/Aug/Sep      |               | 0                | 0                    | 0                  |
| Oct/Nov/Dec      |               | 0                | 2                    | -2                 |
| Jan/Feb/Mar      |               | 0                | 0                    | 0                  |
| Apr/May/June     |               | 2                | 0                    | 2                  |
| <b>Totals</b>    |               | <b>2</b>         | <b>2</b>             | <b>0</b>           |

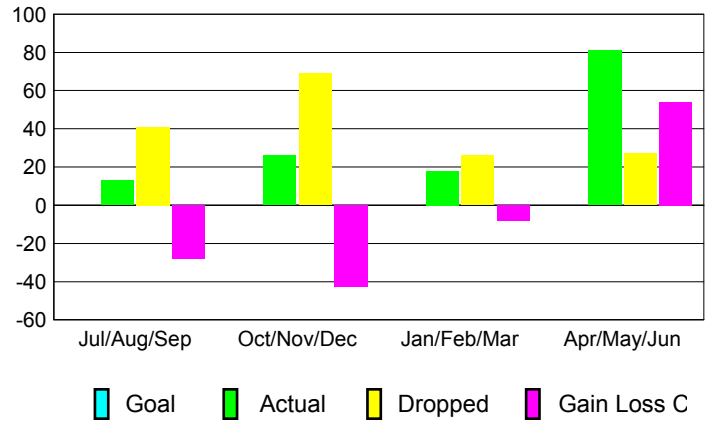
**Club Results 2012-2013**  
Goal, New, Dropped, Gain/Loss



**MEMBERSHIP**

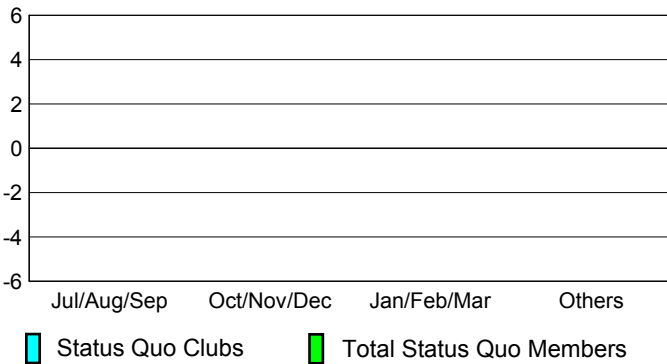
| Month            | Net Memb Goal | Actual New Memb | Actual Dropped Memb | Gain/Loss of Memb |
|------------------|---------------|-----------------|---------------------|-------------------|
| <b>2012-2013</b> |               |                 |                     |                   |
| Jul/Aug/Sep      |               | 13              | 41                  | -28               |
| Oct/Nov/Dec      |               | 26              | 69                  | -43               |
| Jan/Feb/Mar      |               | 18              | 26                  | -8                |
| Apr/May/June     |               | 81              | 27                  | 54                |
| <b>Totals</b>    |               | <b>138</b>      | <b>163</b>          | <b>-25</b>        |

**Membership Results 2012-2013**  
Goal, New, Dropped, Gain/Loss

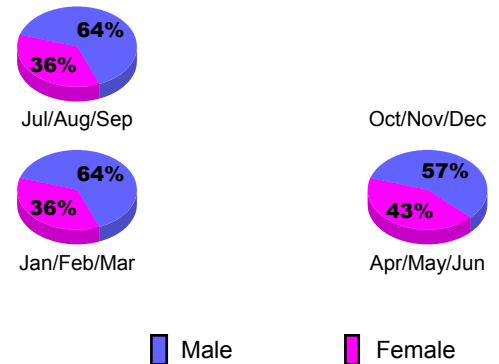


**YTD Status Quo Clubs 2012-2013**

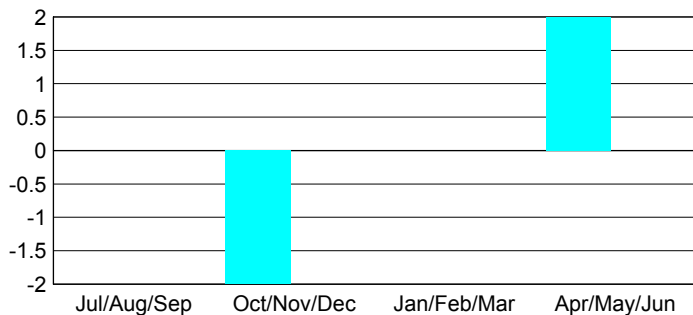
Status Quo Clubs Compared to Status Quo Members



**Gender Comparison 2012-2013**



**Club Gain/Loss 2012-2013**



**Membership Gain/Loss 2012-2013**

